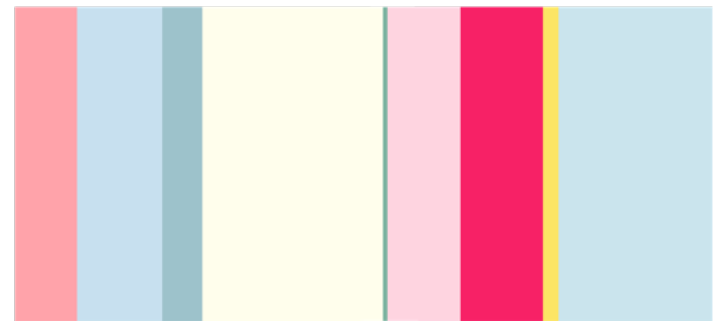
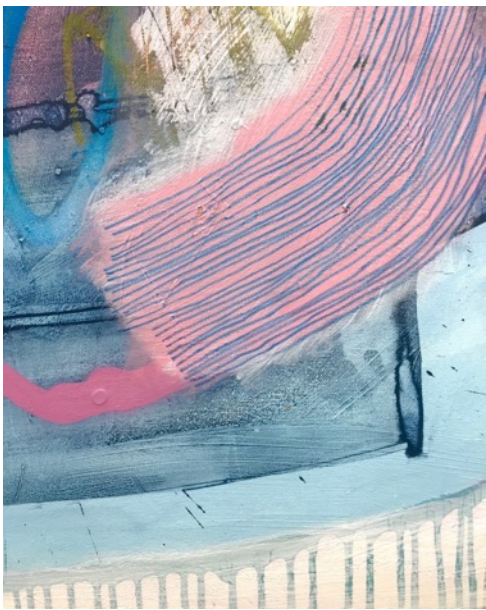


The background of the image consists of a solid blue field overlaid with numerous horizontal, wavy brushstrokes in a dark charcoal or black color. These strokes vary in thickness and density, creating a sense of movement and texture. The overall effect is reminiscent of a hand-painted or printed pattern.

ROSANNA DYKE

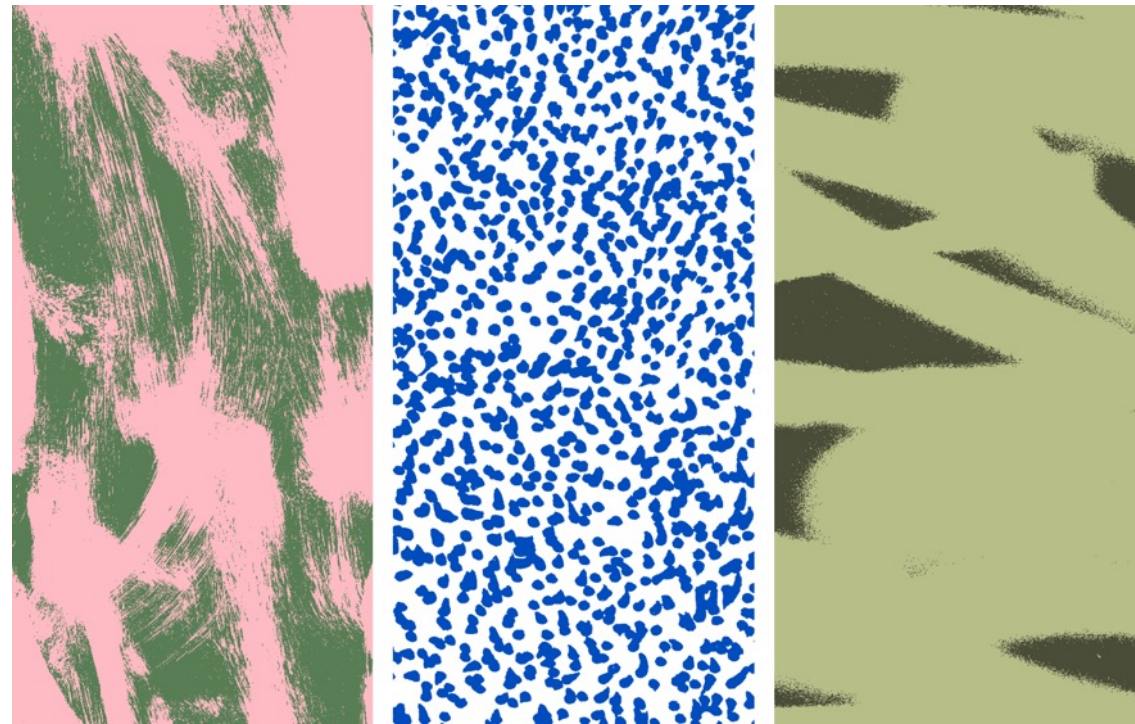
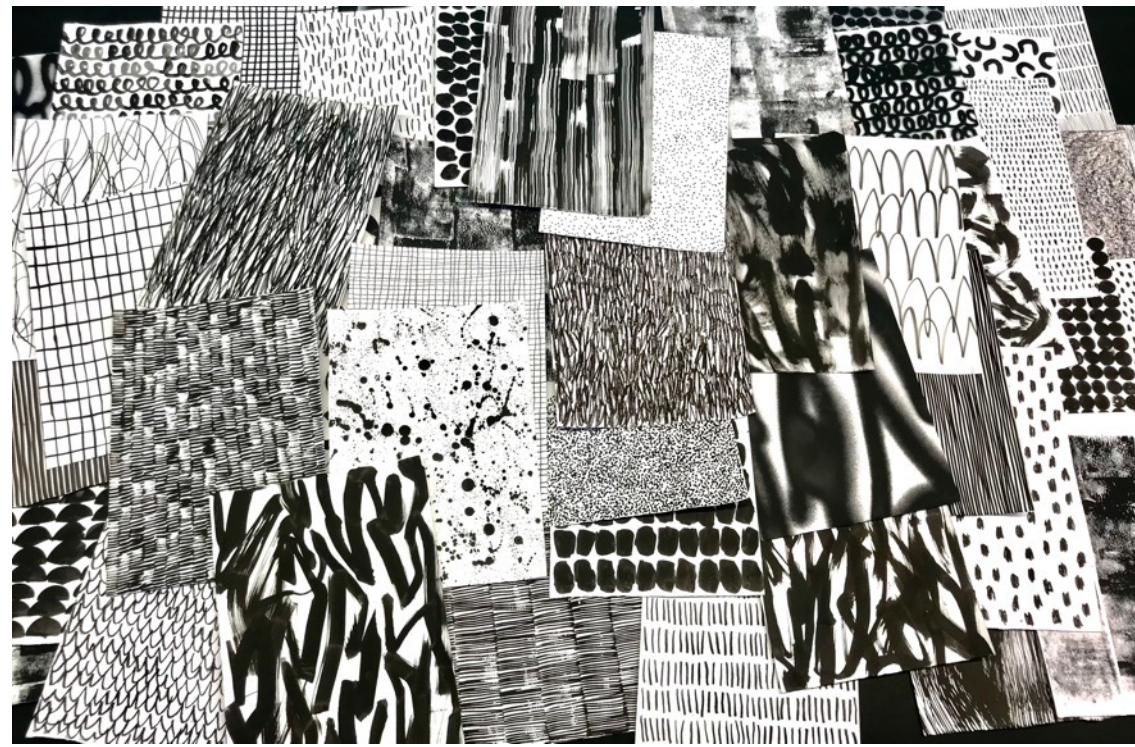
print and surface pattern design



'Friday Collection', hand painted print development and sampling



'Friday Collection', visualisations exploring placement prints for suits



Painted Abstraction



Monki, Moglea, NA-KD, Kiwi & Co,
Laura Slater, Harriet Rose McComb

'Painted Abstraction' moodboard, recolouring hand painted marks



'Painted Abstraction' visualisations exploring print variations



Recolouring hand painted brushstrokes, development into digital print and colour analysis



Visualisations exploring gender neutral print contexts



PLAY



Stella McCartney Kids, Claire Ritchie, Conor Oberst, Pat Bradbury, Petra Leary, Andy Price, Gorman



'PLAY' concept board for childrenswear, pattern development and sampling

Fungarees



Childrenswear 'Fungarees' visualisations



Fruit Salad



Frankie Magazine, Jeanne Ritmueller, Aniek Bartels, Margaret Jean, Gorman

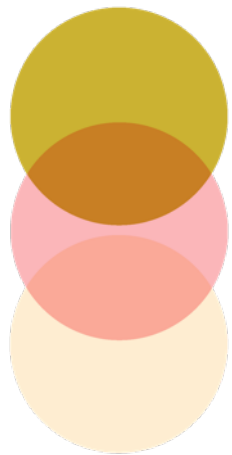
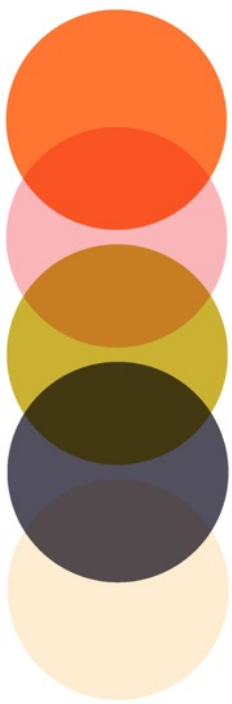
'Fruit Salad' concept board and hand painted fruit



'Fruit Salad' surface pattern collection



Digital illustration and placement graphics



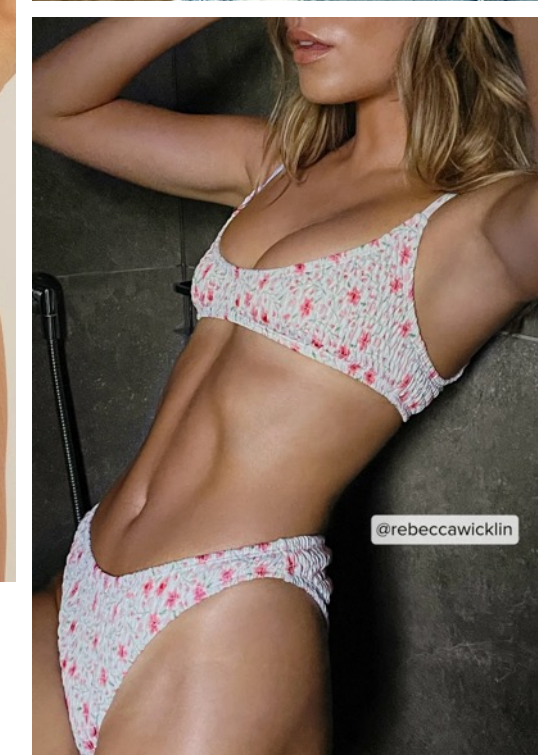
Commissioned botanical print for *Collective Arts Brewing*, Summer Apparel Range



Repeat swirl print designed during internship with NA-KD



Repeat prints and placement graphics designed during internship with NA-KD



Swimwear florals designed during internship with NA-KD